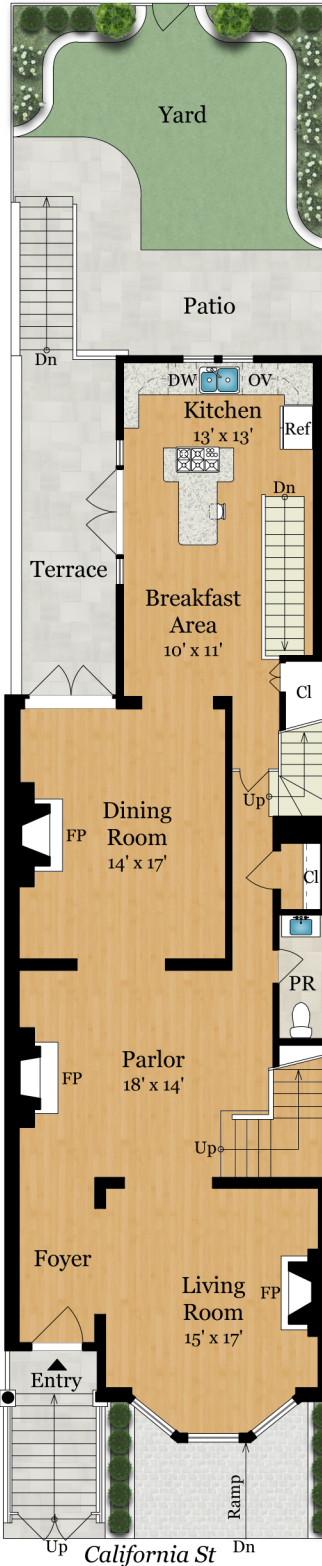


# 2609 CALIFORNIA STREET

SAN FRANCISCO, CA 94115



Estimated Total Finished  
Square Footage: 4,645 SQ FT

Above-Grade: 4,645 SQ FT Below-Grade: N/A  
Plus 965 SQ FT 3-Car Garage on Lower Level  
Plus 45 SQ FT Storage on Lower Level  
Calculated per ANSI Standard Z765-2003.

\* Estimated Total Finished & Unfinished Square Footage: 5,655 SQ FT

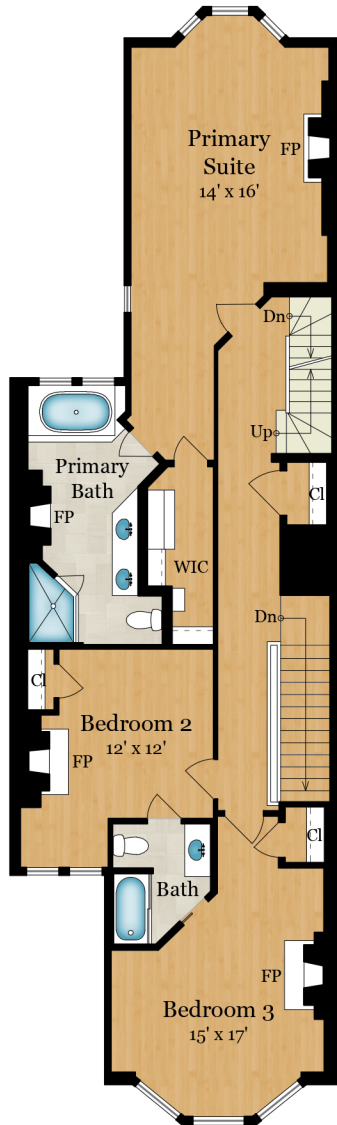
MAIN LEVEL

1,495 SQ FT



# 2609 CALIFORNIA STREET

SAN FRANCISCO, CA 94115



## UPPER LEVEL 1

1,430 SQ FT



# 2609 CALIFORNIA STREET

SAN FRANCISCO, CA 94115



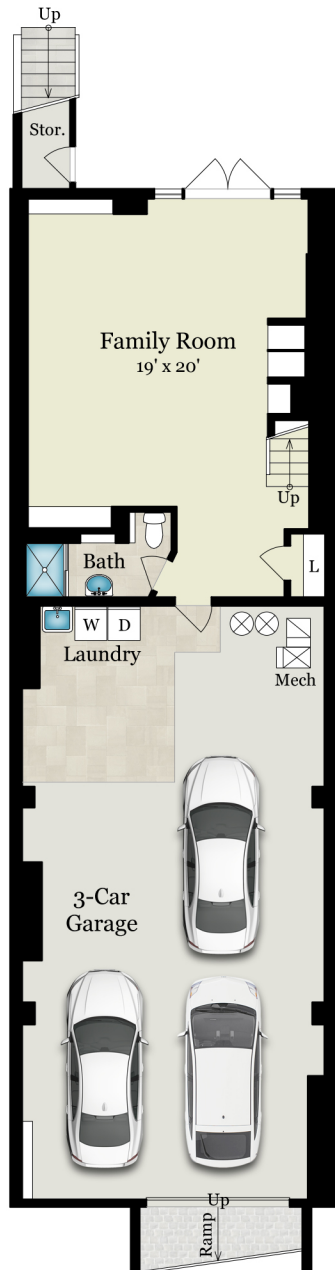
## UPPER LEVEL 2

1,055 SQ FT



# 2609 CALIFORNIA STREET

SAN FRANCISCO, CA 94115



## LOWER LEVEL

665 SQ FT - Finished  
1,010 SQ FT - Finished

